

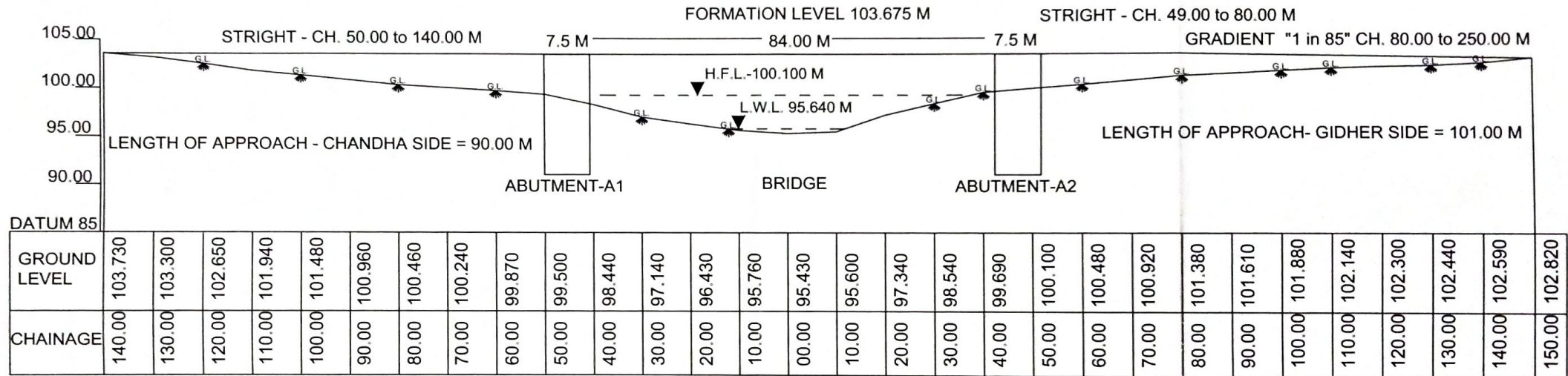
L-SECTION OF APPROACH ROAD FOR THE CONSTRUCTION OF H.L. BRIDGE i/c APPROACH ROAD ACROSS PAIRI RIVER ON CHANDHA TO GIDHER ROAD

LENGTH OF BRIDGE- 84.000 M (04 SPAN@ 21.000 EACH i/c EXP. JOINT)

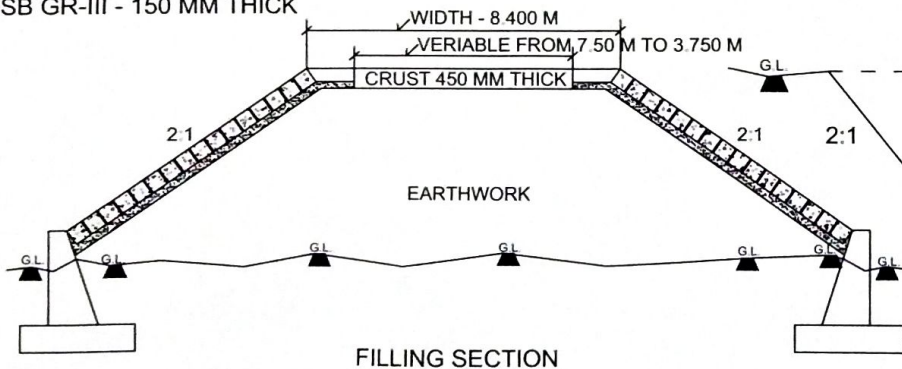
CHANDHA SIDE

TOTAL LENGTH OF APPROACH = 191.00 M

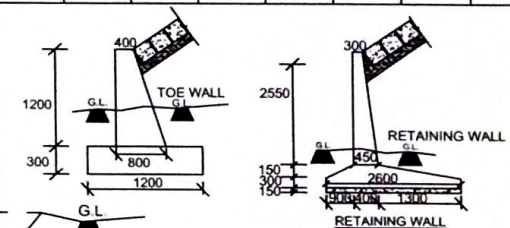
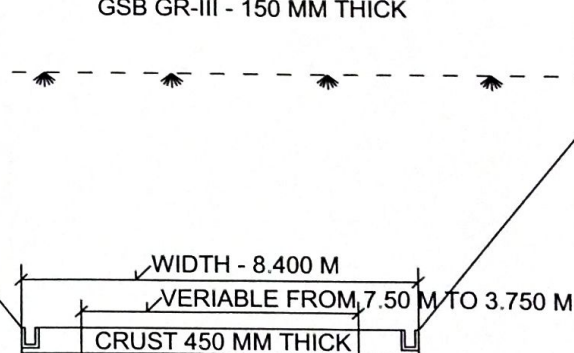
GIDHER SIDE



CRUST 450 MM :-
CCP - 200 MM THICK
PCC M15 - 100 MM THICK
GSB GR-III - 150 MM THICK



CRUST 450 MM :-
CCP - 200 MM THICK
PCC M15 - 100 MM THICK
GSB GR-III - 150 MM THICK



SUBMITTED BY	E.E.	<i>[Signature]</i>
	S.D.O.	<i>[Signature]</i>
	SUB ENGR	<i>[Signature]</i>
DRAWN BY	OFFICE OF THE EXECUTIVE ENGINEER P.W.D. BRIDGE CONSTRUCTION DIVISION - AMBIKAPUR	
DRAWN NAME	L-SECTION AND CROSS SECTION OF APPROACH ROAD FOR THE CONSTRUCTION OF H.L. BRIDGE i/c APPROACH ROAD ACROSS PAIRI RIVER ON CHANDHA TO GIDHER ROAD	